

CPQ Series

CPQ 1613-F



163 l/m
43.1 USGPM








max 130 BAR
1885 P.S.I.

APPLICAZIONI - APPLICATIONS

	ANTINCENDIO FIRE PREVENTION		EDILIZIA CONSTRUCTION
	SPURGO PURGING		PULIZIA STRADALE STREET CLEANING
	PROCESSI INDUSTRIALI INDUSTRIAL PROCESSES		INSTALLAZIONI NAVALI NAVAL INSTALLATIONS
	AUTOLAVAGGIO CARWASH		INSTALLAZIONI AEREOPORTUALI AIRPORT INSTALLATIONS

TECHNICAL PLUS:

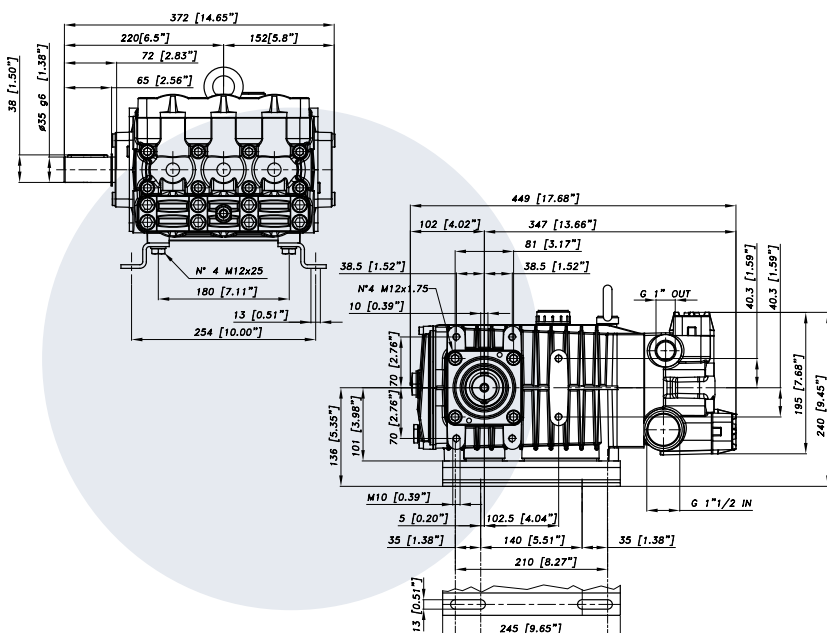
	BZ BIELLE IN BRONZO BRONZE CONRODS
	SX USCITA ALBERO LATO SX LEFT DRIVE SHAFT
	M KIT PIEDINI IN LAMIERA D'ACCIAIO ZINCATI GALVANIZED STEEL MOUNTING RAILS KIT
	B GUARNIZIONI TENUTA ACQUA NBR (BUNA) NBR (BUNA) WATER SEALS
	O PISTONE IN CERAMICA DI GRANDE SPESSORE PER ACQUA CALDA REVERSIBLE CRONKCASE FOR THE LEFT OR RIGHT HANDED

OPTIONAL:

	DX USCITA ALBERO DX RIGHT DRIVE SHAFT
---	--

GUARNIZIONI - SEALS

	GUARNIZIONI ANTERIORI "Y" - GUARNIZIONI POSTERIORI "V" Y FRONT SEALS - V BACK SEALS
---	---



CARATTERISTICHE TECNICHE SPECIFICATIONS

Peso - Weight	55 Kg	121.3 lb
IN	1 1/2 BSP	
Pressione Min - Min Pressure	-0,2 BAR	-3 P.S.I.
Pressione Max - Max Pressure	6 BAR	87 P.S.I.
OUT	1" BSP	
Albero - Shaft	Ø 35 mm	
Max. Temperatura - Max. Temperature	60 °C	140 °F
Tipo olio - Oil type	SAE 75 - W 90	
Capacità olio - Oil capacity	2,8 lt	0.74 U.S.G.



163 l/m
43.1 USGPM

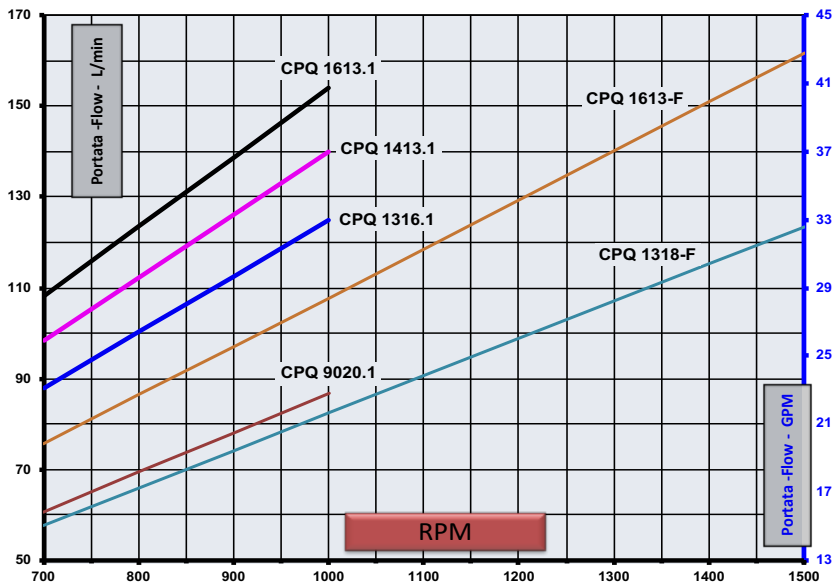


max 130 BAR
1885 P.S.I.

TABELLA RENDIMENTI PERFORMANCE CHART

CODICE CODE	MODELLO MODEL	Press Max Max Pres.		RPM 950				RPM 1200				RPM 1450				Pist. Plung	Corsa Stroke
		BAR	P.S.I.	L/min	GPM	kW	HP	L/min	GPM	kW	HP	L/min	GPM	kW	HP		
73.8672.97.3	CPQ 1318-F	180	2610	83	21,9	29,1	39,6	104	27,5	36,8	50,1	125	33,0	44,0	59,8	30	44
73.8673.97.3	CPQ 1613-F	130	1885	108	28,5	27,6	37,5	136	35,9	34,8	47,3	163	43,1	41,6	56,6	36	40

GRAFICO PRESTAZIONI PERFORMANCE CHART





USCITA POTENZA OUTLET POWER SOURCE

Accoppiamento albero uscita supplementare, per azionamento accessori.
Extra shaft coupling to drive accessories.

